



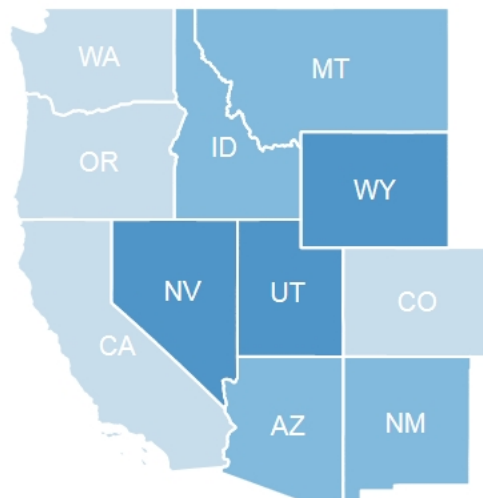
driving in 2004. The average U.S. miles per day is down 7.6% since then. Less people are commuting to work in their own private vehicles, more are working at home, fewer have more than one car, and more forego owning a vehicle altogether.



## Western Economy Atlas

### Headwaters Economics | [READ STORY](#)

This interactive tool from Headwaters Economics presents information on the economic landscape of the westernmost eleven states of the U.S. Economic trends can be investigated at the state, regional, and county levels. Montana, for instance, has gained over 13,000 jobs in the health care/social assistance field--the most in any field--but the retail industry still provides the most jobs, over 70,000 total.



## Upcoming Events

### Community Development Extension Institute

February 26-28, 2014  
Boise, ID  
Sponsor: CDEI

### 2014 National Interagency Community Reinvestment Conference

March 30-April 2, 2014  
Chicago, IL  
Sponsor: Federal Reserve Bank of San Francisco, et al.

### International Association for Community Development

June 9-11, 2014  
Glasgow, Scotland  
Sponsor: International Association for Community Development

## Grants, Awards & Jobs

### [Transportation for Veterans in Rural Areas](#)

Deadline: February 3, 2014  
Funder: Department of Veterans Affairs

### [Grants that Increase Employment Outcomes for People with Disabilities](#)

Deadline: February 7, 2014  
Funder: Kessler Foundation

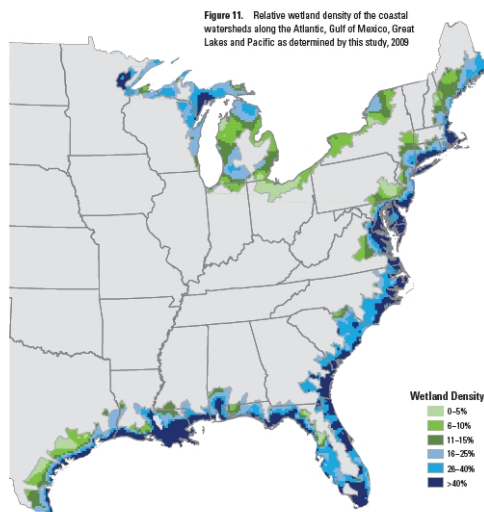
### [Support for Social Justice Issues](#)

Deadline: February 14, 2014  
Funder: Public Welfare Foundation

## One of Nation's Key Ecosystems Being Lost at Staggering Rate

### NOAA | [READ STORY](#)

From 2004-2009 wetland area in the coastal watersheds of the U.S. dropped by over 360,000 acres according to the U.S. Fish and Wildlife Service and the National Oceanic and Atmospheric Administration (NOAA) in [their report](#). That amounts to an annual loss of over 80,000 acres, a 25 percent-increase since the agencies' previous reporting period.



## US Navy Predicts Summer Ice Free Arctic by 2016

### Annual Review of Earth and Planetary Science | [READ STORY](#)

An ongoing US Department of Energy-backed research project led by a US Navy scientist predicts that the Arctic could lose its summer sea ice cover as early as 2016 - 84 years ahead of conventional model projections. The project, based out of the US Naval Postgraduate School's Department of Oceanography, uses complex modelling techniques that make its projections more accurate than others. A paper by principal investigator Professor Wieslaw Maslowski in the Annual Review of Earth and Planetary Sciences sets out some of the findings.

### Projects that are Designed and Implemented by Women and Girls

Deadline: February 15, 2014  
Funder: Open Meadows Foundation

### Community Action Grants Program

Deadline: February 15, 2014  
Funder: American Association of University Women (AAUW)

### Champions for Healthy Kids Program

Deadline: March 15, 2014  
Funder: General Mills

### Grant Proposals for Youth Creativity Programs

Deadline: April 15, 2014  
Funder: Lego Children's Fund

### Support for Organizations Assisting Low-Income Communities

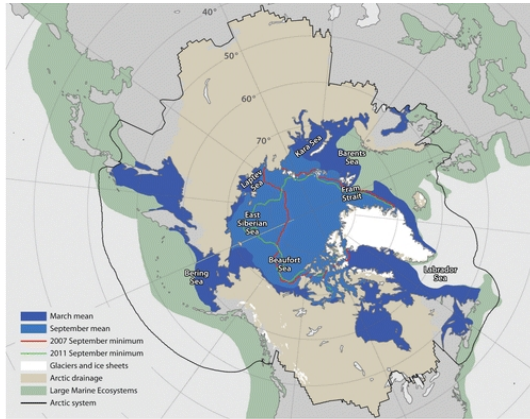
Deadline: Open  
Funder: The Kresge Foundation

### Support for Vulnerable Children Programs Worldwide

Deadline: Open  
Funder: Dorothea Haus Ross Foundation

### Proposals for Environmental, Education, Human Services Projects

Deadline: April 30, 2014  
Funder: The Lawrence Foundation

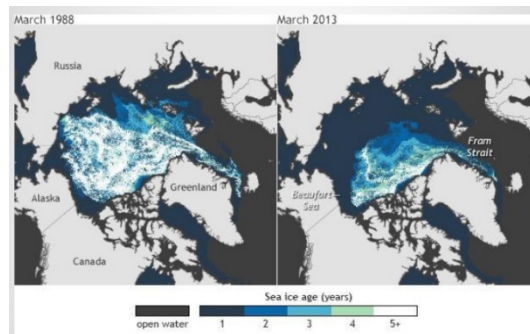


Maslowski W, et al. 2012. Annu. Rev. Earth Planet. Sci. 40:625-54

## NOAA: Expect 'Widespread, Sustained Changes' in the Arctic

### NOAA | [READ STORY](#)

Three decades of a consistent warming trend have made a greener Arctic the new normal, and "widespread, sustained changes" are set to come to region, the National Oceanic and Atmospheric Administration said in a recent assessment.



## Humanity Wholly Unprepared for Abrupt Climate Impacts, Warns Report

### National Academy of Sciences | [READ STORY](#)

A new report released by scientists in the National Academy of Sciences says the sudden impacts of climate change this century and beyond are inevitable but warn that far too little has been done to prepare for them stating, 'the pace of change is orders of magnitude higher than what species have experienced in the last tens of millions of years.'

### WY to Diversify Energy Investments

Star Tribune; January 1

### ND Train Derailment Evokes Safety Concerns

Denver Post; December 31

### Home Electricity Use Lowest Since 2001

Idaho Statesman; December 30

### FAA Selects Eight States for Drone Test Sites

New York Times; December 30

### Mercury Levels Rising Around Alberta Oilsands

Canada.com; December 29

## Montana News

### Housing Starts Boost Rate of Building in Bitterroot

Ravalli Republic; January 1

### MT Gas Prices Lowest in the Nation

Flathead Beacon; December 31

### Blewett Not to Run for Re-election

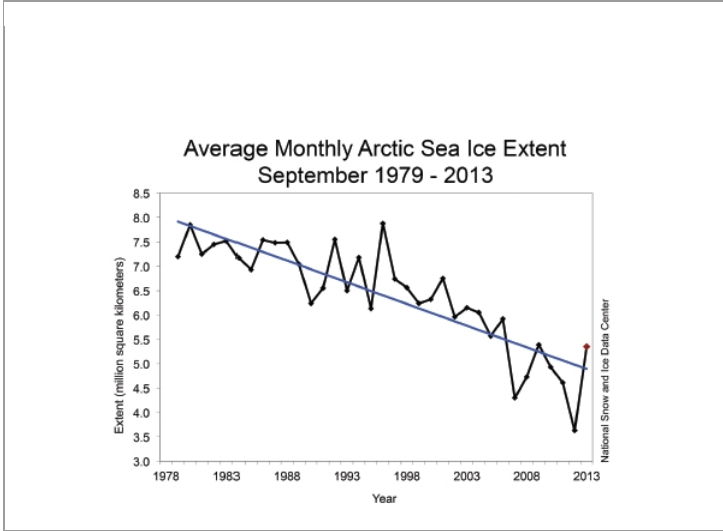
Great Falls Tribune; December 31

### Building Boom in Billings

Billings Gazette; December 29

### Mixed Bag for MT Mining in 2013

Missoulian; December 29



MSU Extension Community Development | Wilson Hall 2-117 P.O. Box 172240 | Bozeman, MT 59717-2240

Tel: (406) 994-3620

Back issues of the MACDEP E-news are available [here](#)

To subscribe to the Montana CD E-Newsletter, send a request to: [commdev@montana.edu](mailto:commdev@montana.edu)