

# MACDEP NEWS

MONTANA ASSOCIATION OF COMMUNITY DEVELOPMENT EXTENSION PROFESSIONALS

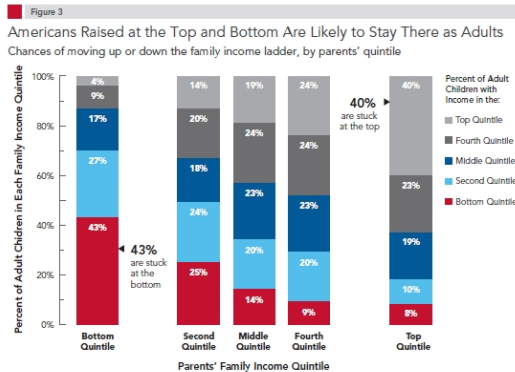
December 2012

## Reports & Resources

### Mobility and the American Dream

#### Pew Charitable Trusts | [READ STORY](#)

This investigation by the Pew Charitable Trusts organization maps economic mobility across key population demographics, concluding that, while most children earn more than their parents, movement between economic strata remains uncommon.



### Rural Unemployment

#### Daily Yonder | [READ STORY](#)

This report, compiled by Daily Yonder, shows that two-thirds of rural and exurban counties in the United States record unemployment rates lower than or equal to the national average, a four-year low in rural joblessness.

### President's Corner

The National Association of Community Development Extension Professionals (NACDEP), in partnership with the Joint Council of Extension Professionals invites you to submit an abstract to present at the 2013 Galaxy IV Conference, held in Pittsburgh, Pennsylvania September 16-20, 2013. The deadline is January 10, 2013.

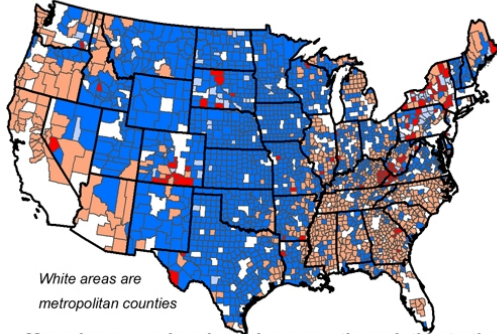
The [2013 Community Development Society Conference](#) will be held July 20-24, 2013 in Charleston, South Carolina, USA. [The Call for Abstracts](#) provides all the details; the deadline is Feb. 15, 2013

-Paul Lachapelle  
MACDEP President

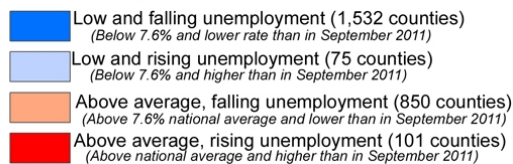
### Upcoming Events

## Rural Employment in September

In the last employment report before Tuesday's election, most of rural America shows decreasing unemployment rates



Map shows rural and exurban counties relative to the national unemployment rate of 7.6% in September 2012; and whether rates are rising or falling in the last year

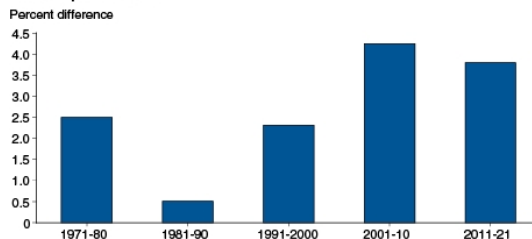


## Good News for American Agriculture

### Amber Waves | [READ STORY](#)

The agriculture industry fared better during the great recession, and current economic/financial conditions indicate that strong income growth trends will persist into the near future.

Developing-country economic growth increases relative to that of developed countries



Source: USDA, Economic Research Service, International Macroeconomic Data Set, 2012: [www.ers.usda.gov/data-products/international-macroeconomic-data-set.asp](http://www.ers.usda.gov/data-products/international-macroeconomic-data-set.asp)

## Diabetes in America

### APMA | [READ STORY](#)

The American Podiatric Medical Association has designed a straightforward infographic to raise awareness and demonstrate the prevalence of diabetes

## Disasters and Environment: Science, Preparedness, and Resilience

January 15-17, 2013

Washington, DC

Sponsor: National Council for Science and the Environment

## 12th Annual New Partners for Smart Growth Conference

February 7-9, 2013

Kansas City, MO

Sponsor: Local Government Commission

## Beyond the Boundaries: Creating Innovation Through Regional Collaboration

July 20-24, 2013

Charleston, SC

Sponsor: Community Development Society

## 2013 Rural Sociological Society Annual Meeting

August 6-9, 2013

New York, NY

Sponsor: Rural Sociological Society

## NACDEP Galaxy IV

September 15-22, 2013

Pittsburgh, PA

Sponsor: Joint Council of Extension Professionals

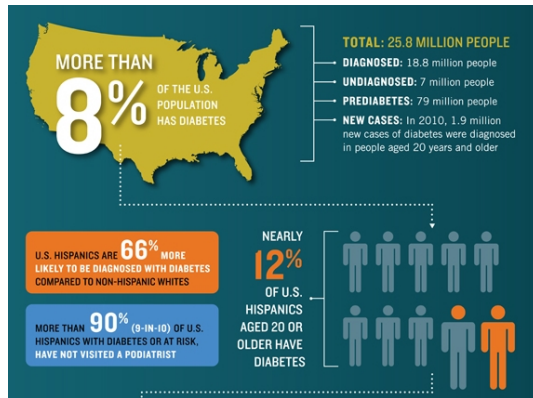
## Grants, Awards & Jobs

## Native Agriculture & Food Systems Initiative (NAFSI)

Deadline: December 21, 2012

Funder: First Nations Development Institute

among Americans. More than 8% of the population has been diagnosed with diabetes.



## Birth Rate at Record Low

**Pew Research Center | [READ STORY](#)**

The United States birth rate is at a record low, particularly among recent immigrants. This low marks the culmination of an ongoing trend in decreasing birth rates since 2007.



Source: Statistics calculated using National Center for Health Statistics, U.S. Census and American Community Survey data (see Methodology)

PEW RESEARCH CENTER

## Rural Voter Turnout

**Daily Yonder | [READ STORY](#)**

## Civil Society and Environment Program Grants

Deadline: December 31, 2012  
Funder: Charles Stewart Mott Foundation

## Continuum of Care (CoC) Program Grants

Deadline: January 18, 2013  
Funder: U.S. Department of Housing and Urban Development (HUD)

## CATCH Planning, Implementation, and Resident Grants

Deadline: January 31, 2013  
Funder: Community Access To Child Health (CATCH)

## Sparks! Ignition Grants for Libraries and Museums

Deadline: February 1, 2013  
Funder: Institute of Museum and Library Services (IMLS)

## National/International News

### National Housing Recovery Remains Erratic

Denver Post; November 7

### Group Demands Wyoming Fracking Secrets

Star Tribune; November 27

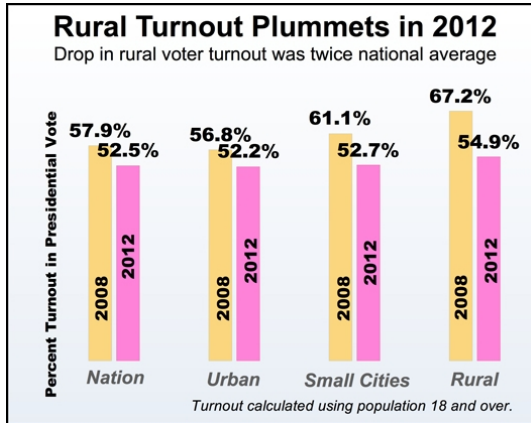
### New York Fielding New Building Code

New York Times; November 23

### Urban Ecology Offers Vision for Community Development

Nature; November 20

Although there was a nation-wide dip in voter turnout for the 2012 presidential election, the decline in turnout among constituents of rural districts was twice that of the national average, dropping by 18% from 2008.

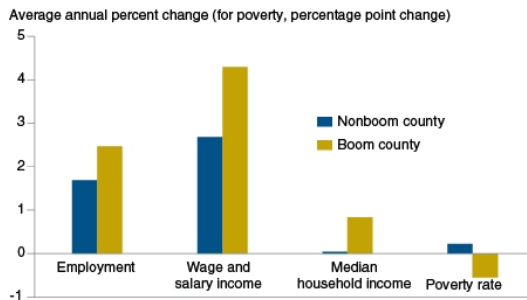


## Natural Gas and Local Jobs

### Amber Waves | [READ STORY](#)

Despite continued controversy surrounding the topic of natural gas extraction, Amber Waves reports that expansion in natural gas production helps to create a boost in short-term local jobs.

**Employment and income grew faster in counties with a boom in gas production, 1999-2007**



Note: Median household income is the income at which half of all households in the county have more income and half have less.

Source: USDA, Economic Research Service analysis using data from the Bureau of Economic Analysis and the U.S. Census Bureau. Boom county designation is based on gas production data obtained from State organizations in Colorado, Texas, and Wyoming that monitor oil and gas development.

## Cap-and-Trade Effective in California

Mercury News; November 20

## Montana News

### Utilities Seek Natural Gas Price Hike

Montana Standard; December 1

### Missoula Request for Frenchtown Mill Superfund Status

Missoulian; December 1

### Trapping Prohibited in Bass Creek

Ravalli Republic; November 29

### State Reaches out to Identify Poachers

Helena IR; November 27

### Montana Among Major Oil Boom States

Seattle Times; November 25



Back issues of the MACDEP E-news are available [here](#)  
To subscribe to the Montana CD E-Newsletter, send a request to: [commdev@montana.edu](mailto:commdev@montana.edu)