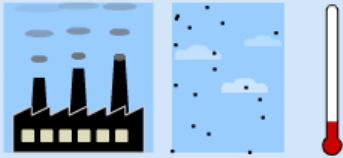


Hide Instructions



Step Forward

Play

Carbon Dioxide Emissions
(Gigatons Carbon per Year)

10.5

Time step size:

5 years

Show which graphs?

CO2 Emission Rate △

CO2 Concentration ●

Temperature ■

Start Over

Change Settings

Instructions

Use this Very Simple Climate Model to explore the influence of carbon dioxide on Earth's temperature.

- Click the **Step Forward** button.
- Use the **slider** to set a new value for **Carbon Dioxide Emissions**.
- Click the **Step Forward** button again.
- Click the **Play** button to move forward through time faster; you can change emissions 'on the fly' as you move along.

Click the **checkboxes** (lower left) to see graphs of **Carbon Dioxide Concentration** and **Temperature**.

Use the **Start Over** button to wipe the slate clean and start a new model run.

Click the **Change Settings** button to adjust some key values that control the model: climate sensitivity, atmospheric fraction, and the rate of carbon dioxide removal.

You can switch between **Celsius** and **Fahrenheit** scales on the temperature graph.

You can stretch or shrink the scales on the temperature and carbon dioxide concentration graphs using the **Highest temperature** and **Highest concentration** menus.

Close

Temperature scale: Celsius

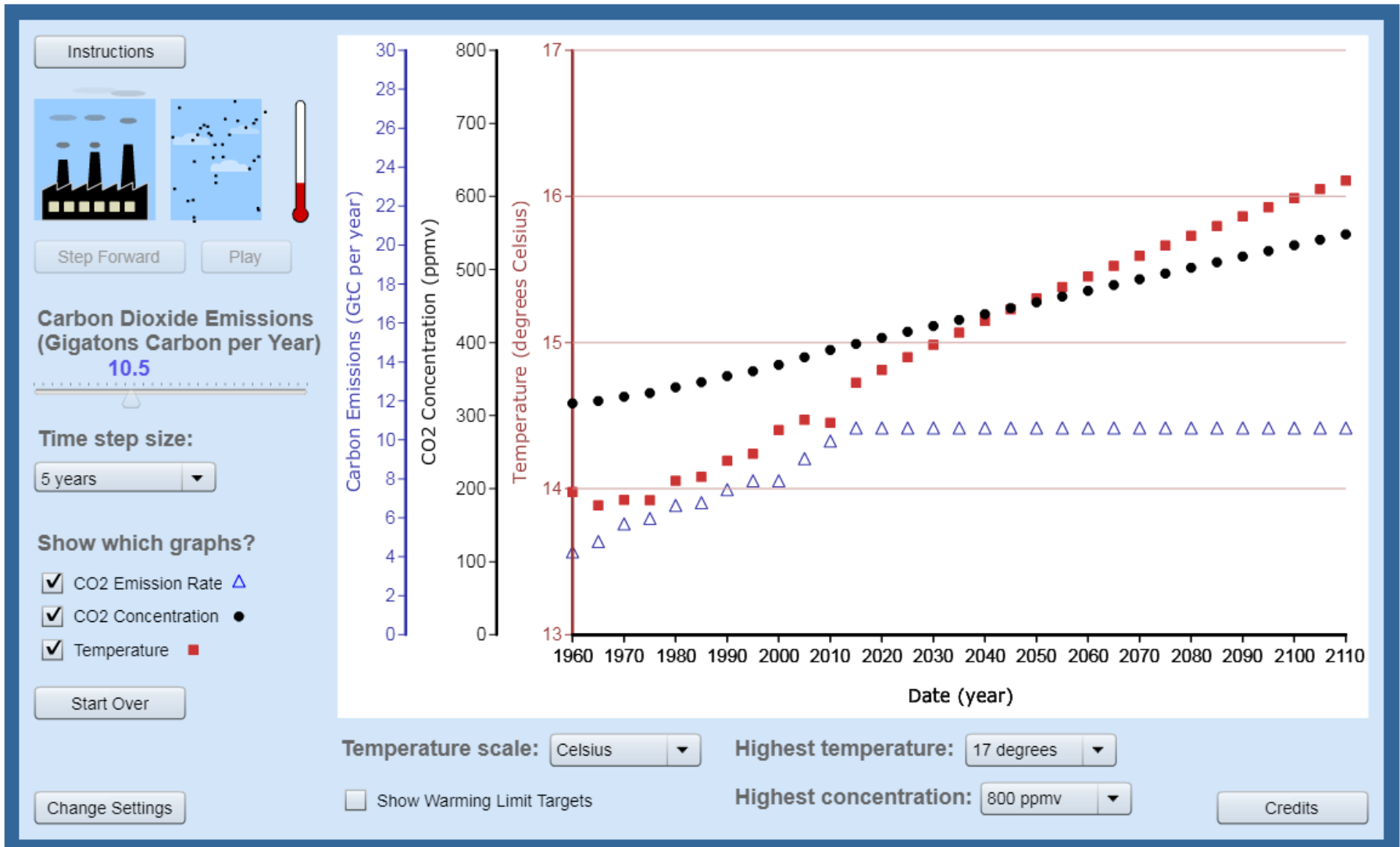
Highest temperature: 17 degrees

Show Warming Limit Targets

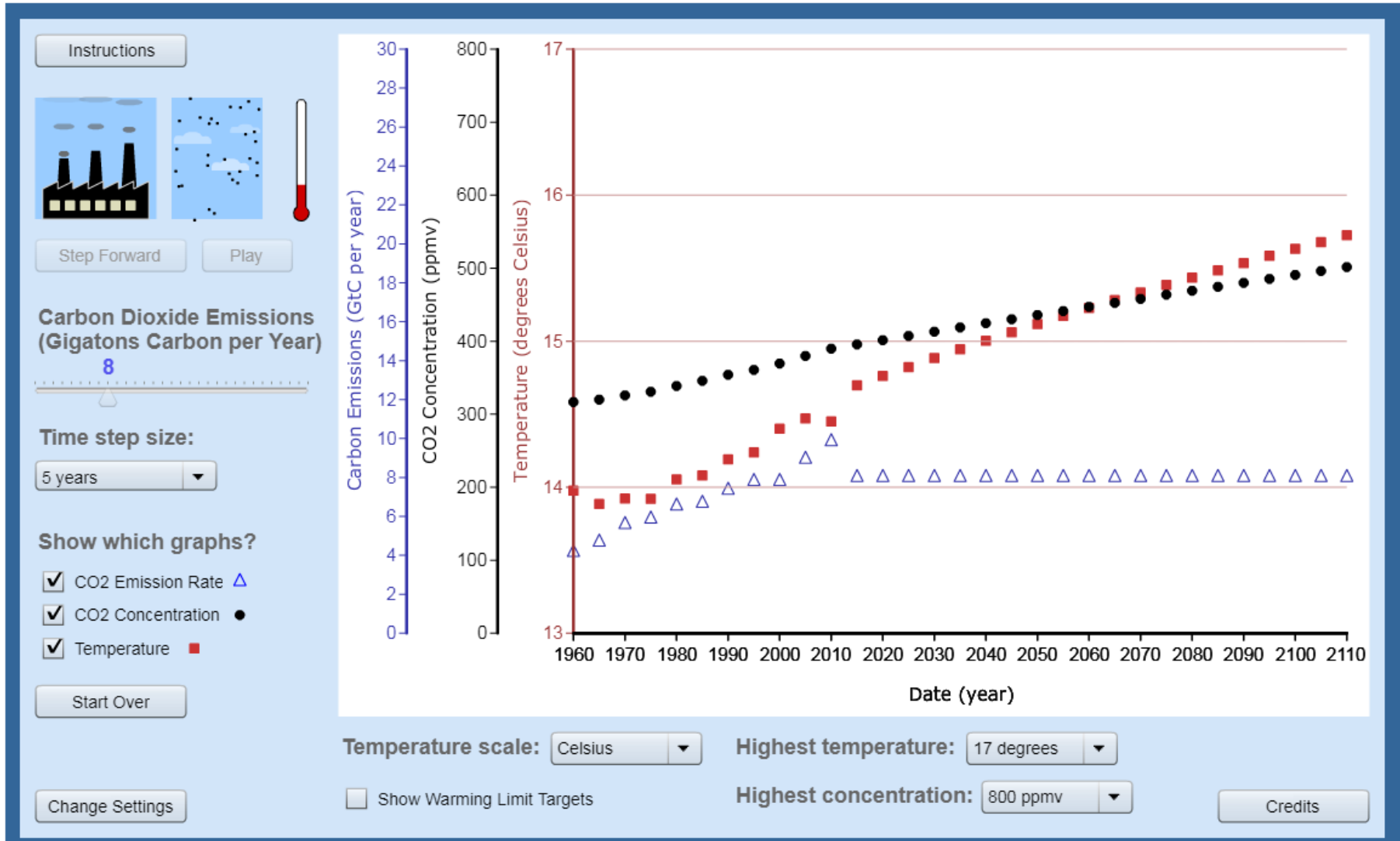
Highest concentration: 800 ppmv

Credits

CO₂ Emissions – 10.5



CO₂ Emissions – Lower (8)



CO₂ Emissions – Higher (11.2)

